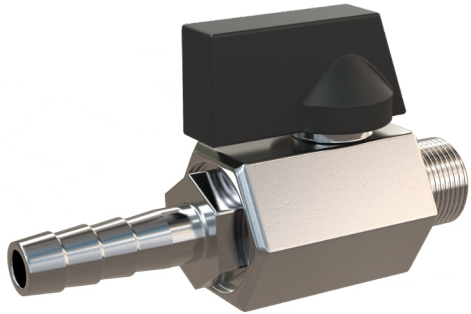


Ventilation- and drain valves



The ventilation valves have to be installed at the highest point of the filter housing.

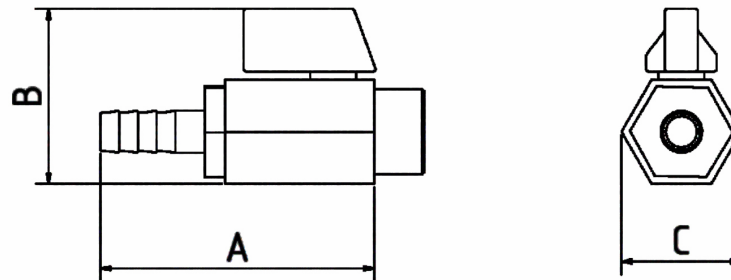
This way all the air that accumulates after startup can be released.

The drain valves can be used to completely drain the housing before exchanging the filter elements.

The valves are prepared with sealing tape so they can easily be installed on the housing.

Technical data

| | |
|-----------------------|------------------------|
| Material: | Stainless steel 1.4408 |
| Gasket: | PTFE |
| Sealing tape included | |



Dimensions

| Size | A | B | C |
|------|---------|-------|-----------|
| 1/8" | 79 mm | 38 mm | ca. 25 mm |
| 1/4" | 58,5 mm | 38 mm | ca. 25 mm |
| 3/8" | 60 mm | 38 mm | ca. 25 mm |
| 1/2" | 66 mm | 42 mm | ca. 29 mm |

Order specifications

Ventilation valves

| Size | Article-No. | Description |
|------|--------------|--|
| 1/8" | MKH-1/8-10-E | Ventilation valve 1/8" with hose fitting \varnothing 8 mm |
| 1/4" | MKH-1/4-8 | Ventilation valve 1/4" with hose fitting \varnothing 8 mm |
| 3/8" | MKH-3/8-10-E | Ventilation valve 3/8" with hose fitting \varnothing 10 mm |
| 1/2" | MKH-1/2-13-E | Ventilation valve 1/2" with hose fitting \varnothing 13 mm |

Drain valves

| Size | Article-No. | Description |
|------|--------------|--|
| 3/8" | MKH-1/8-10-A | Drain valve 3/8" with hose fitting \varnothing 10 mm |
| 1/2" | MKH-1/2-13-A | Drain valve 1/2" with hose fitting \varnothing 13 mm |